

STONIMAGE

How to be A Global Leader in Services?

Many of us are facing after-sales trouble no matter private or governmental control company, time is invaluable and most worrying for us. Once the machine shut down, the production shut down either, and we start to lose money quickly and come to an operation crisis So what we do here?

- ◆ Fast Action in Services
- ◆ Unconditional Parts Supply
- ◆ Strong Professionalism
- ◆ Spotless Satisfaction

This is how STONIMAGE started to make business. What we do is giving the fastest services after supplying high-quality level products.

XINXIANG STONIMAGE TECHNOLOGY CO. LTD

新乡市石像科技有限公司

Email: inquire@stonimage.com

Tel: +86 373 5853611 +86 173 3736 9213

www.stonimagelift.com

Add: 1522#, Gongyuanguoji, Hongqi district, Xinxiang city, Henan, China

STONIMAGE

was founded at end of 2014, is a global brand and manufacturer of lifting equipment and material handling equipment, we owns the most professional engineering team, R & D center and manufacturing base with rich experience in lifting industry. We are working with full passion in continuous innovation and improving services level.

Currently, STONIMAGE is focusing on Innovation, Manufacturing and Supplying of various lifting equipment, transportation machinery and construction machinery, mainly as below:

- Ladder Lift, Solar Panel Lift, Glass and window lift, Glass trolley
- Cargo truck elevator, Fish elevator, Mountain cargo Lift
- Electric scaffold, Wall building platform
- Electric forklift, Brick stacker, Installation Forklift for Pipe/Panel
- Scissor lift, Retractable stairs, Belt conveyor
- Restaurant Meal elevator
- Food lift
- Roller shutter lift
- Electric forklift
- Loading material lift



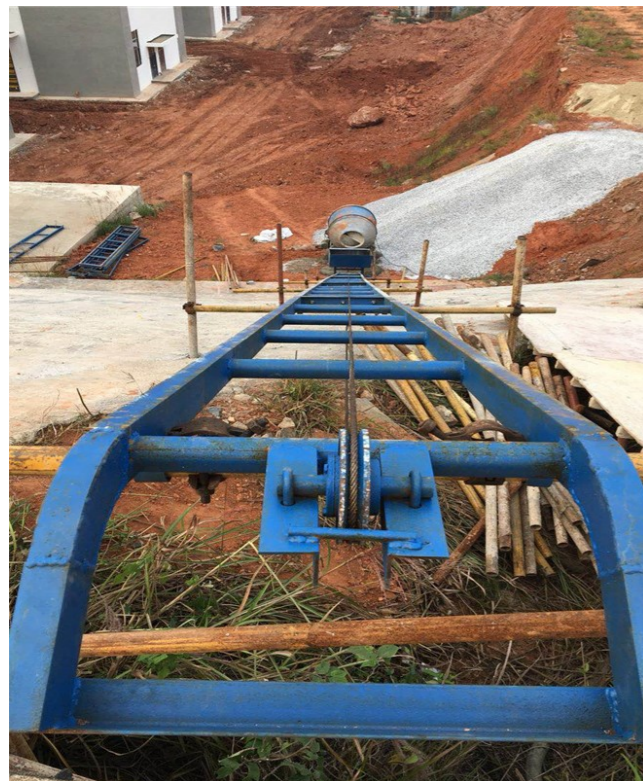
- **Aerial Ladder Lift**
- ✓ For Solar panel
- ✓ For Glass/window/door
- ✓ For Construction material



- **Cargo Truck Loader**
- **Fish Truck Loader**

Loading Material Lift

- ✓ Max. Lifting Capacity: 500kg / 1000kg / 2000kg
- ✓ Track length: 3~500m
- ✓ For transport concrete, sand, bag and so on.



Technical Data

Max. Lifting Capacity	Track length	Track size	Rail channel steel	Bucket capacity	Wire rope dia.
500kg	3~500m	3m/ section,51cm width, 80mm pipe	3.5mm	0.3cbm	8mm
1000kg	3~300m	3m/ section,71cm width, 80mm pipe	4.5mm	0.5cbm	10mm
2000kg	3~300m	3m/ section,91cm width, 100mm pipe	5.5mm	1cbm	10mm

Technical Notes:

- 1) Motor: 220V 50hz (single phase)
- 2) Control: Remote control
- 3) Options: L type tray/ Flat type tray/ Bucket
- 4) Packing: Wooden case (especially for export)

Loading Material Lift

- ✓ Max. Lifting Capacity: 150kg/250kg/300kg
- ✓ Track length: 3~12m
- ✓ For transport bucket, sand, box, round log and so on.



Technical Data

Max. Lifting Capacity	Track length	Track size	Motor	Speed	Wire rope dia.
150kg	3~12m	3m/ section,40cm width as standard	1.5kw	15m/min	8mm
250kg	3~12m	3m/ section,40cm width as standard	1.9kw	19m/min	8mm
300kg	3~12m	3m/ section, 40cm width as standard	3kw	19m/min	8mm

Technical Notes:

- 1) Motor: 220V 50hz (single phase)
- 2) Control: Remote control
- 3) Options: bucket tray/ Flat tray/ Oval tray
- 4) Packing: Wooden case (especially for export)

Application 应用案例

